

NAPA COUNTY  
LOT LINE ADJUSTMENT - COMPLETE

Lot Line Adjustment Number

400 Scale Map Number:

Lands of

Documents Recorded:

Document Numbers:

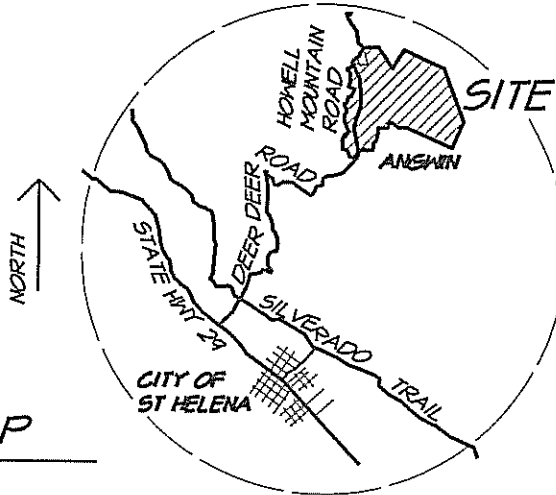
Agent:

by:

Date:

# PACIFIC UNION COLLEGE LOT MERGER

NAPA COUNTY CALIFORNIA



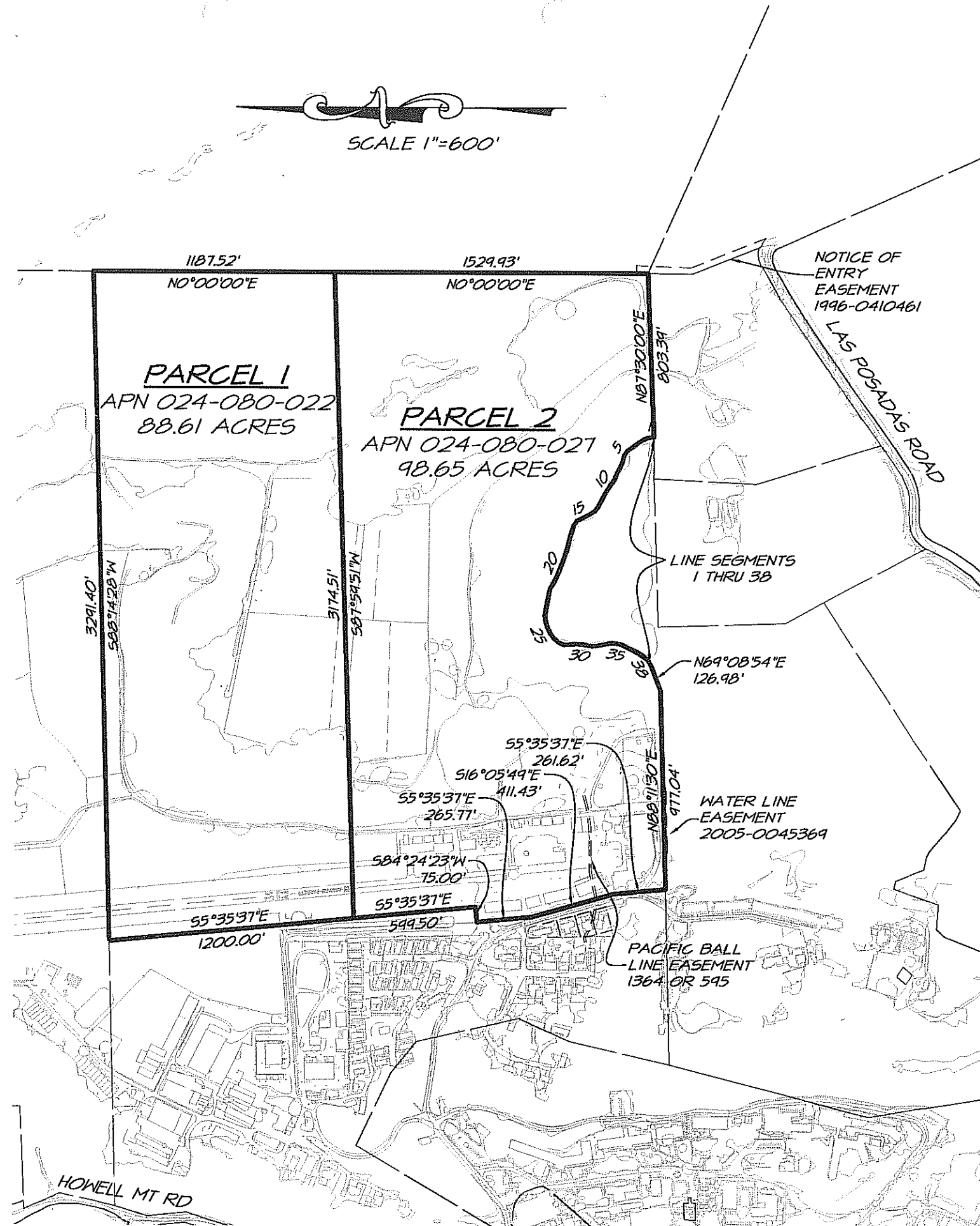
VICINITY MAP

NO SCALE

ASSESSOR PARCEL NUMBER	APN: 024-080-022	APN: 024-080-027
OWNER	PACIFIC UNION COLLEGE ASSN. 1 ANGWIN AVE ANGWIN, CA 95408	PACIFIC UNION COLLEGE ASSN. 1 ANGWIN AVE ANGWIN, CA 95408
SITE ADDRESS	NONE	NONE
PROPERTY SIZE IN ACRES	88.61 ± ACRES	98.65 ± ACRES
LAND USE EXISTING PROPOSED	MIXED USE MIXED USE	MIXED USE MIXED USE
WATER SOURCE EXISTING PROPOSED	HOWELL MT WATER COMPANY HOWELL MT WATER COMPANY	HOWELL MT WATER COMPANY HOWELL MT WATER COMPANY
SEWAGE DISPOSAL EXISTING PROPOSED	SEWER TREATMENT PLANT SEWER TREATMENT PLANT	SEWER TREATMENT PLANT SEWER TREATMENT PLANT
ZONING EXISTING PROPOSED	AW, AV AW, AV	AW, AV AW, AV
GENERAL PLAN EXISTING PROPOSED	AWOS AWOS	AWOS AWOS
WILLIAMSON ACT EXISTING PROPOSED	NOT UNDER CONTRACT NO CONTACT PROPOSED	NOT UNDER CONTRACT NO CONTACT PROPOSED

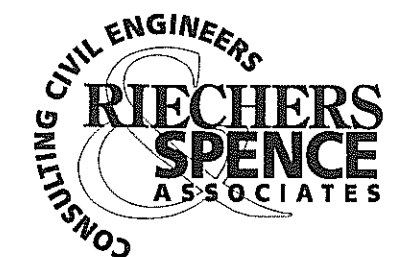
# EXISTING PARCELS

NAPA COUNTY CALIFORNIA



PARCEL LINE TABLE		
LINE #	DIRECTION	LENGTH
1	S55°47'08"E	28.09'
2	S25°53'57"E	29.95'
3	S32°29'36"E	29.59'
4	S36°56'41"E	60.26'
5	S54°43'57"E	29.75'
6	S76°22'36"E	29.78'
7	S68°05'05"E	35.68'
8	S59°59'50"E	29.12'
9	S68°27'30"E	30.05'
10	S56°19'21"E	61.29'
11	S59°47'22"E	29.09'
12	S61°43'45"E	66.53'
13	S51°15'19"E	29.72'
14	S34°44'21"E	29.82'
15	S26°44'21"E	65.63'
16	S54°43'08"E	29.73'
17	S72°13'43"E	59.62'
18	S77°42'35"E	61.35'
19	S71°35'27"E	29.83'

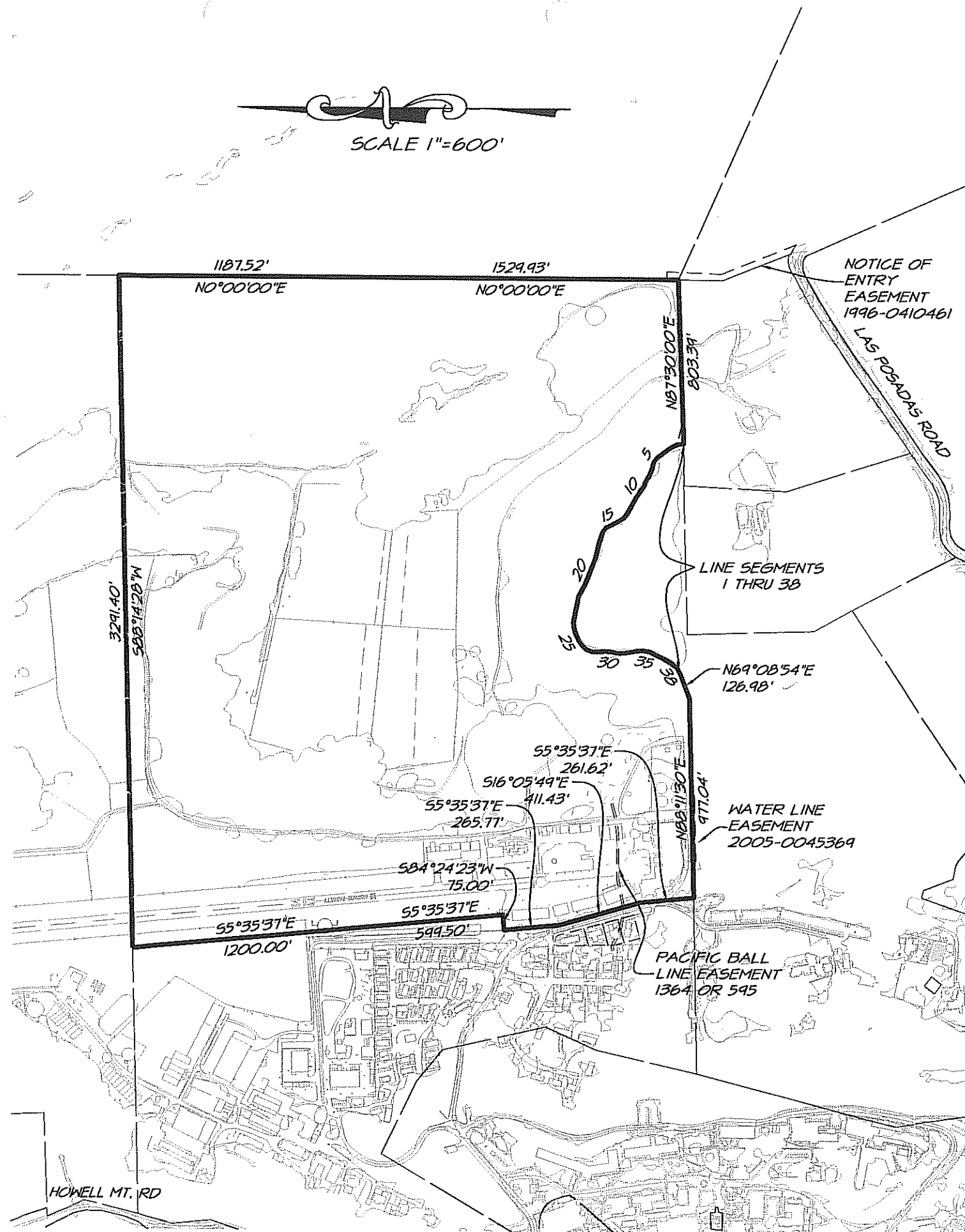
PARCEL LINE TABLE		
LINE #	DIRECTION	LENGTH
20	S68°41'31"E	124.91'
21	S61°57'42"E	60.03'
22	S79°18'10"E	127.53'
23	N82°43'44"E	30.16'
24	N73°03'11"E	34.31'
25	N65°20'59"E	29.02'
26	N52°44'49"E	30.88'
27	N42°36'27"E	30.38'
28	N22°59'09"E	29.91'
29	N3°02'05"W	66.20'
30	N3°55'43"E	27.31'
31	N12°06'19"E	30.13'
32	N0°16'28"E	29.66'
33	N10°07'35"W	65.80'
34	N3°21'42"W	31.52'
35	N11°30'27"E	29.26'
36	N25°25'55"E	93.17'
37	N33°10'21"E	29.98'
38	N62°03'57"E	31.10'
39	N40°18'52"E	34.70'



1515 Fourth Street  
Napa, Calif. 94559  
v 707.252.3301  
f 707.252.4966

# PROPOSED PARCELS

NAPA COUNTY CALIFORNIA



PARCEL LINE TABLE		
LINE #	DIRECTION	LENGTH
1	S55°47'08"E	28.09'
2	S25°53'57"E	29.95'
3	S32°29'36"E	29.59'
4	S36°56'41"E	60.26'
5	S54°43'57"E	29.75'
6	S76°22'36"E	29.78'
7	S68°05'05"E	35.68'
8	S59°59'50"E	29.12'
9	S68°27'30"E	30.05'
10	S56°19'21"E	61.29'
11	S59°47'22"E	29.09'
12	S61°43'45"E	66.53'
13	S51°15'19"E	29.72'
14	S34°44'21"E	29.82'
15	S26°44'21"E	65.63'
16	S54°43'08"E	29.73'
17	S72°13'43"E	59.62'
18	S77°42'35"E	61.35'
19	S71°35'27"E	29.83'

PARCEL LINE TABLE		
LINE #	DIRECTION	LENGTH
20	S68°41'31"E	124.91'
21	S61°57'42"E	60.03'
22	S79°18'10"E	127.53'
23	NB2°43'44"E	30.16'
24	N73°03'11"E	34.31'
25	N65°20'59"E	29.02'
26	N52°44'49"E	30.88'
27	N42°36'27"E	30.38'
28	N22°59'09"E	29.91'
29	N3°02'05"W	66.20'
30	N3°55'43"E	27.31'
31	N12°06'19"E	30.13'
32	N0°16'28"E	29.66'
33	N10°07'35"W	65.80'
34	N3°21'42"W	31.52'
35	N11°30'27"E	29.26'
36	N25°25'55"E	93.17'
37	N33°10'21"E	29.98'
38	N62°03'57"E	31.10'
39	N40°18'52"E	34.70'

CONSULTING CIVIL ENGINEERS  
**RIECHERS SPENCE ASSOCIATES**  
 1515 Fourth Street  
 Napa, Calif. 94559  
 v 707.252.3301  
 f 707.252.4966