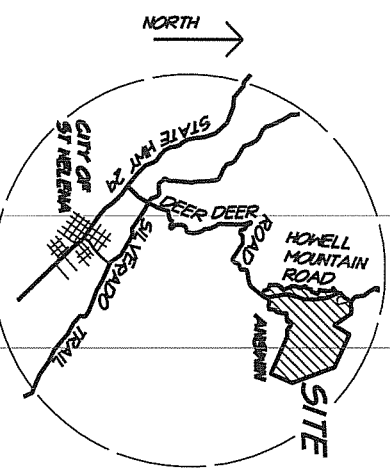


EXISTING PARCEL INFORMATION

	PARCEL 1	PARCEL 2	PARCEL 3	PARCEL 4
ASSESSOR PARCEL NUMBER	APN: 024-163-008 APN: 024-410-013	APN: 024-410-012	APN: 024-400-004 024-400-005 024-400-006	APN: 024-410-008
OWNER	PACIFIC UNION COLLEGE ASSN. 1 ANSWIN AVENUE ANSWIN, CA 94508	PACIFIC UNION COLLEGE ASSN. 1 ANSWIN AVENUE ANSWIN, CA 94508	PACIFIC UNION COLLEGE ASSN. 1 ANSWIN AVENUE ANSWIN, CA 94508	PACIFIC UNION COLLEGE ASSN. 1 ANSWIN AVENUE ANSWIN, CA 94508
SITE ADDRESS	275 COLLEGE AVE. ** ANSWIN, CA 94508 ** ANSWIN FIRE DEPARTMENT	7 BROOKSIDE DRIVE	004 = 1 ANSWIN AVENUE 005 = 5 ANSWIN AVENUE 006 = 7 ANSWIN AVENUE	HOWELL MOUNTAIN ROAD
PROPERTY SIZE IN ACRES	14.60± ACRES	6.20± ACRES	8.43 ACRES	63.51 ACRES
LAND USE EXISTING	VACANT	RESIDENTIAL / MIXED USE RESIDENTIAL / MIXED USE	COMMERCIAL COMMERCIAL	MISCELLANEOUS MISCELLANEOUS
PROPOSED WATER SOURCE EXISTING	PACIFIC UNION COLLEGE	PACIFIC UNION COLLEGE	PACIFIC UNION COLLEGE	PACIFIC UNION COLLEGE
PROPOSED WATER SOURCE	PACIFIC UNION COLLEGE	PACIFIC UNION COLLEGE	PACIFIC UNION COLLEGE	PACIFIC UNION COLLEGE
SEWAGE DISPOSAL EXISTING	PACIFIC UNION COLLEGE	PACIFIC UNION COLLEGE	PACIFIC UNION COLLEGE	PACIFIC UNION COLLEGE
PROPOSED SEWAGE DISPOSAL	PACIFIC UNION COLLEGE	PACIFIC UNION COLLEGE	PACIFIC UNION COLLEGE	PACIFIC UNION COLLEGE
WILLIAMSON ACT EXISTING	NOT UNDER CONTRACT	NOT UNDER CONTRACT	NOT UNDER CONTRACT	NOT UNDER CONTRACT
PROPOSED WILLIAMSON ACT	NO CONTACT PROPOSED	NO CONTACT PROPOSED	NO CONTACT PROPOSED	NO CONTACT PROPOSED



VICINITY MAP

RECEIVED

MAR 13 2013

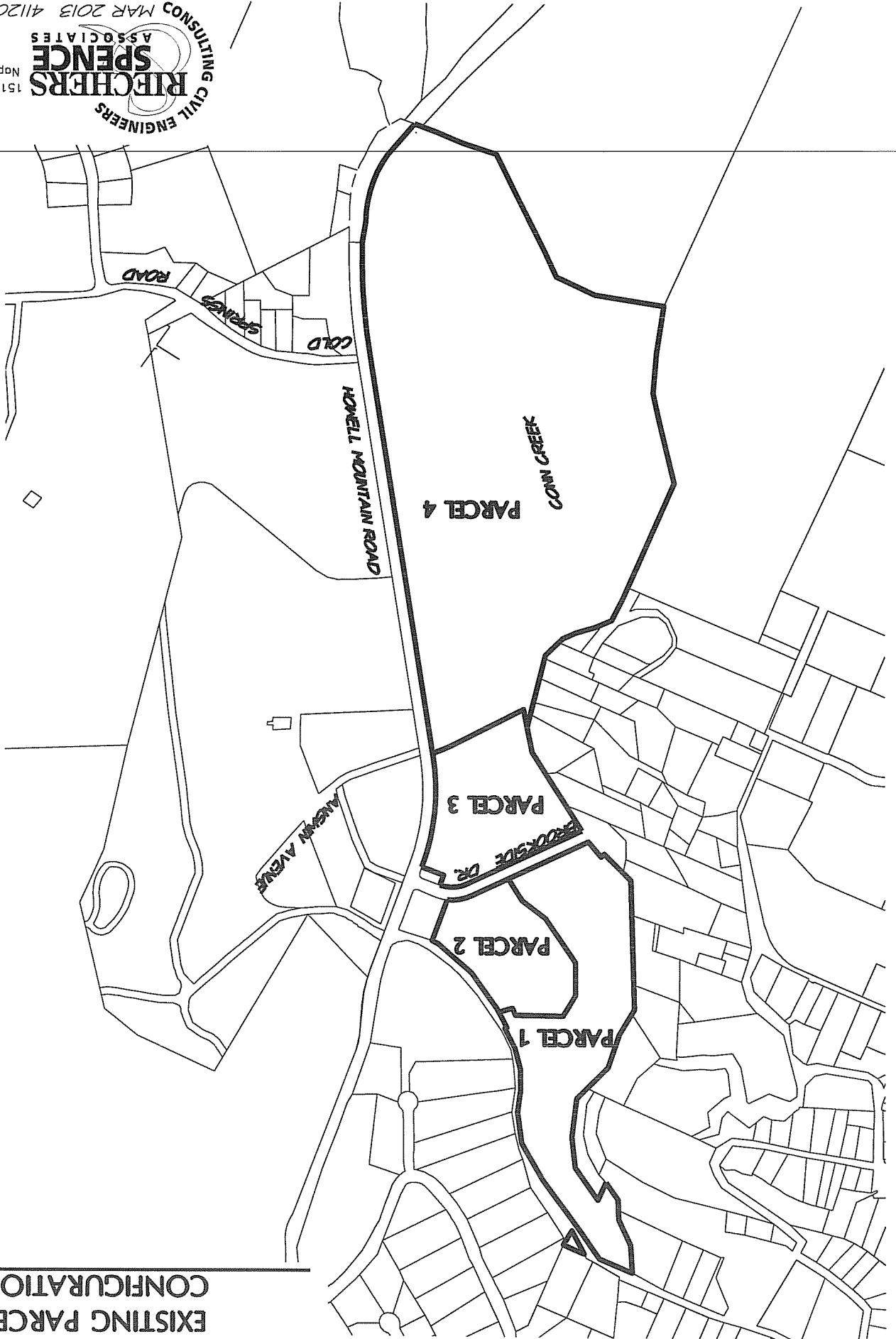
NAPA COUNTY
DEPT. OF PUBLIC WORKS

PACIFIC UNION COLLEGE
LOT LINE ADJUSTMENT
NAPA COUNTY CALIFORNIA

CONSULTING CIVIL ENGINEERS
**RIECHERS
SPENCE
ASSOCIATES**

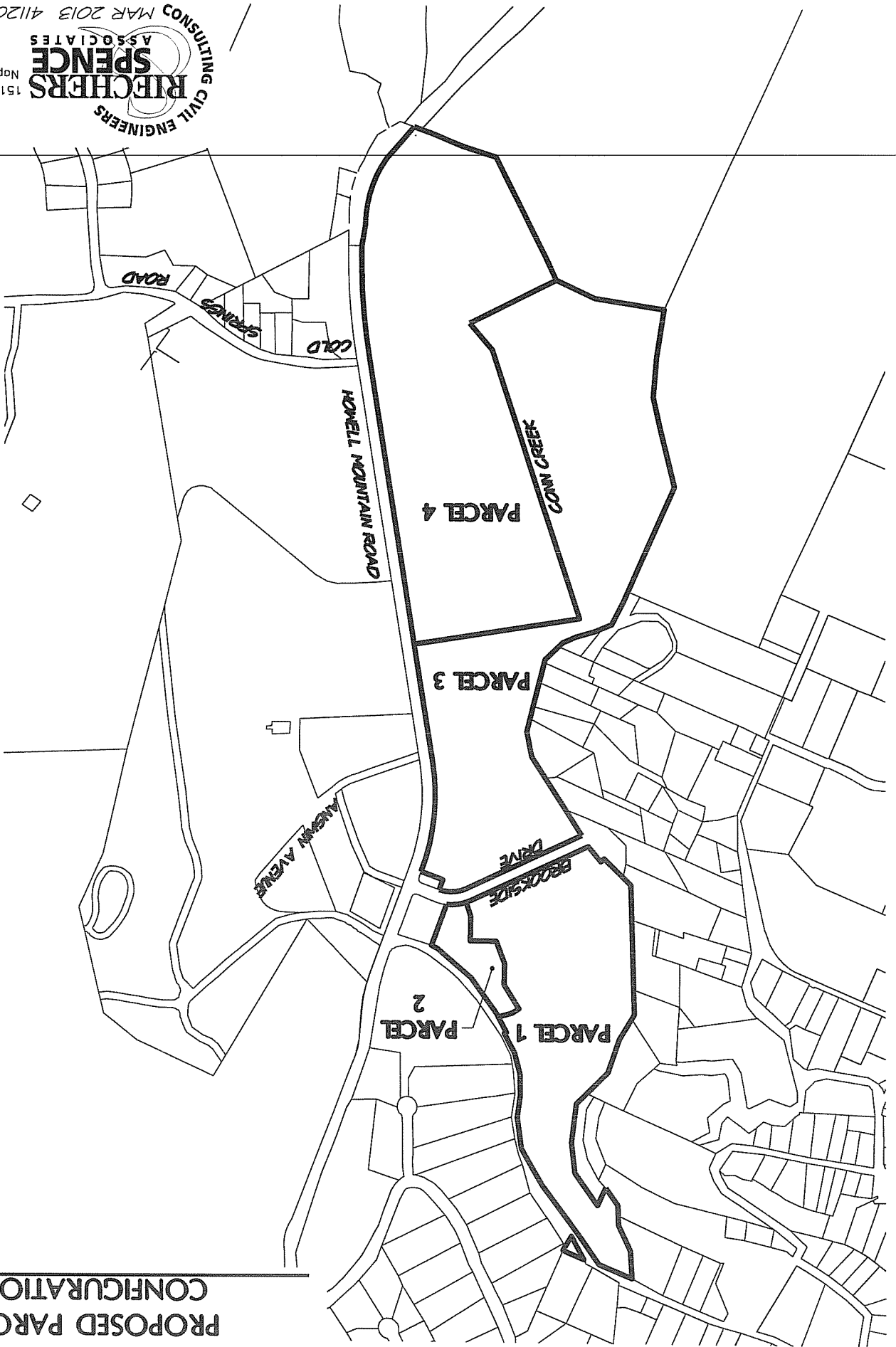
1515 Fourth Street
Napa, Calif. 94559
V 707.252.3301
F 707.252.4966

**EXISTING PARCEL
CONFIGURATION**



SCALE: 1"=600'

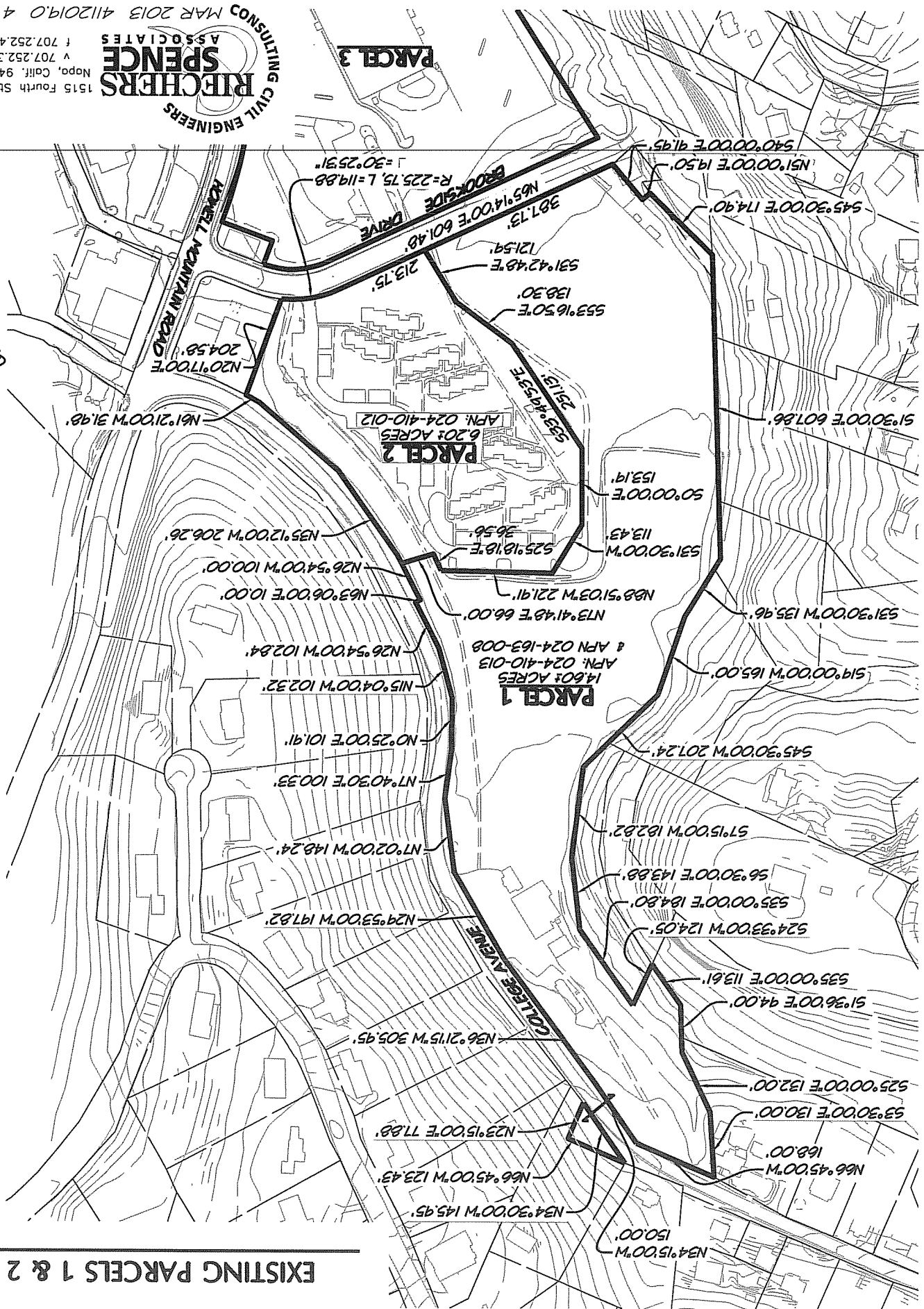
**PROPOSED PARCEL
CONFIGURATION**



SCALE: 1"=600'

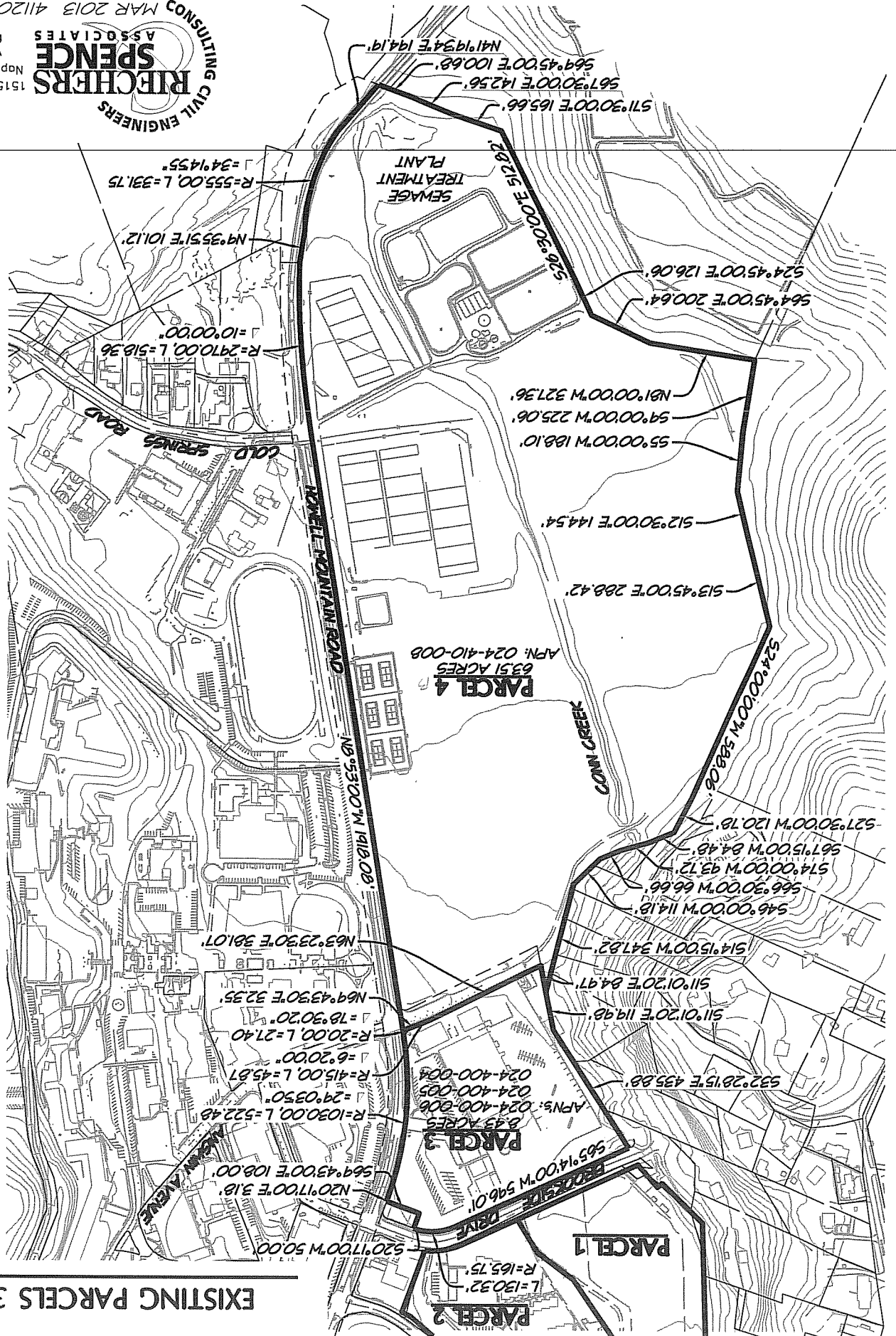


SCALE: 1"=250'



EXISTING PARCELS 1 & 2

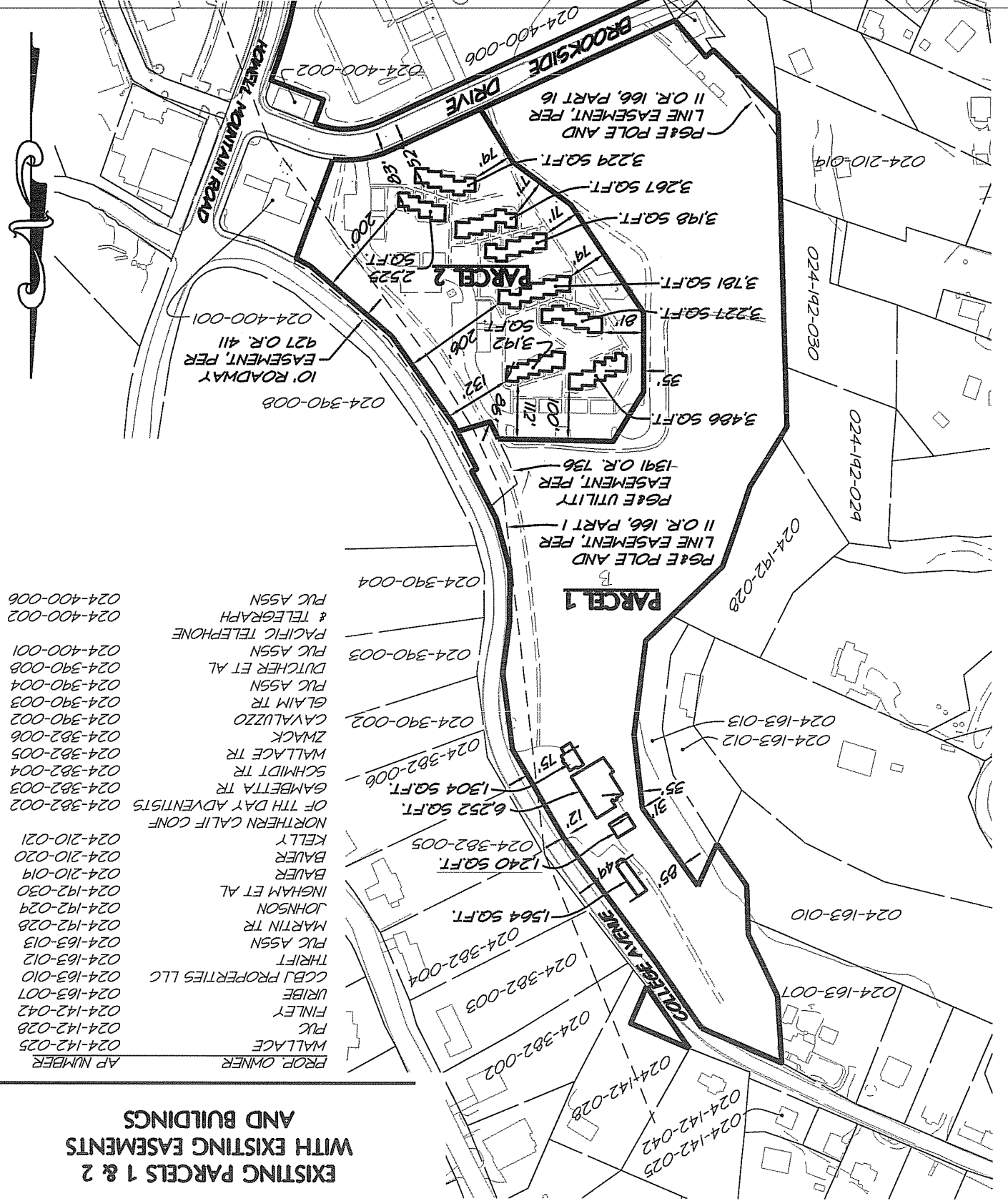
SCALE: 1"=400'



EXISTING PARCELS 3 & 4

PARCEL 3
 SEE SHEET 12

SCALE: 1"=250'



- AP NUMBER
 WALLACE
 FINLEY
 WALLACE
 FINLEY
 URBIB
 CGBJ PROPERTIES LLC
 THRIFT
 024-163-010
 024-163-012
 024-163-013
 024-192-028
 024-192-029
 024-192-030
 024-210-019
 024-210-020
 024-210-021
 WALLACE
 FINLEY
 URBIB
 CGBJ PROPERTIES LLC
 THRIFT
 024-163-010
 024-163-012
 024-163-013
 024-192-028
 024-192-029
 024-192-030
 024-210-019
 024-210-020
 024-210-021
 OF 7TH DAY ADVENTISTS
 GAMBETTA TR
 SCHMIDT TR
 WALLACE TR
 ZWACK
 024-382-006
 024-382-005
 024-382-004
 024-382-003
 024-382-002
 1304 SQ.FT.
 024-382-006
 024-382-002
 024-390-002
 CAVALLUZZO
 GLAIM TR
 PUC ASSN
 DUTCHER ET AL
 PUC ASSN
 024-390-003
 & TELEGRAPH
 PUC ASSN
 024-400-002
 024-400-001

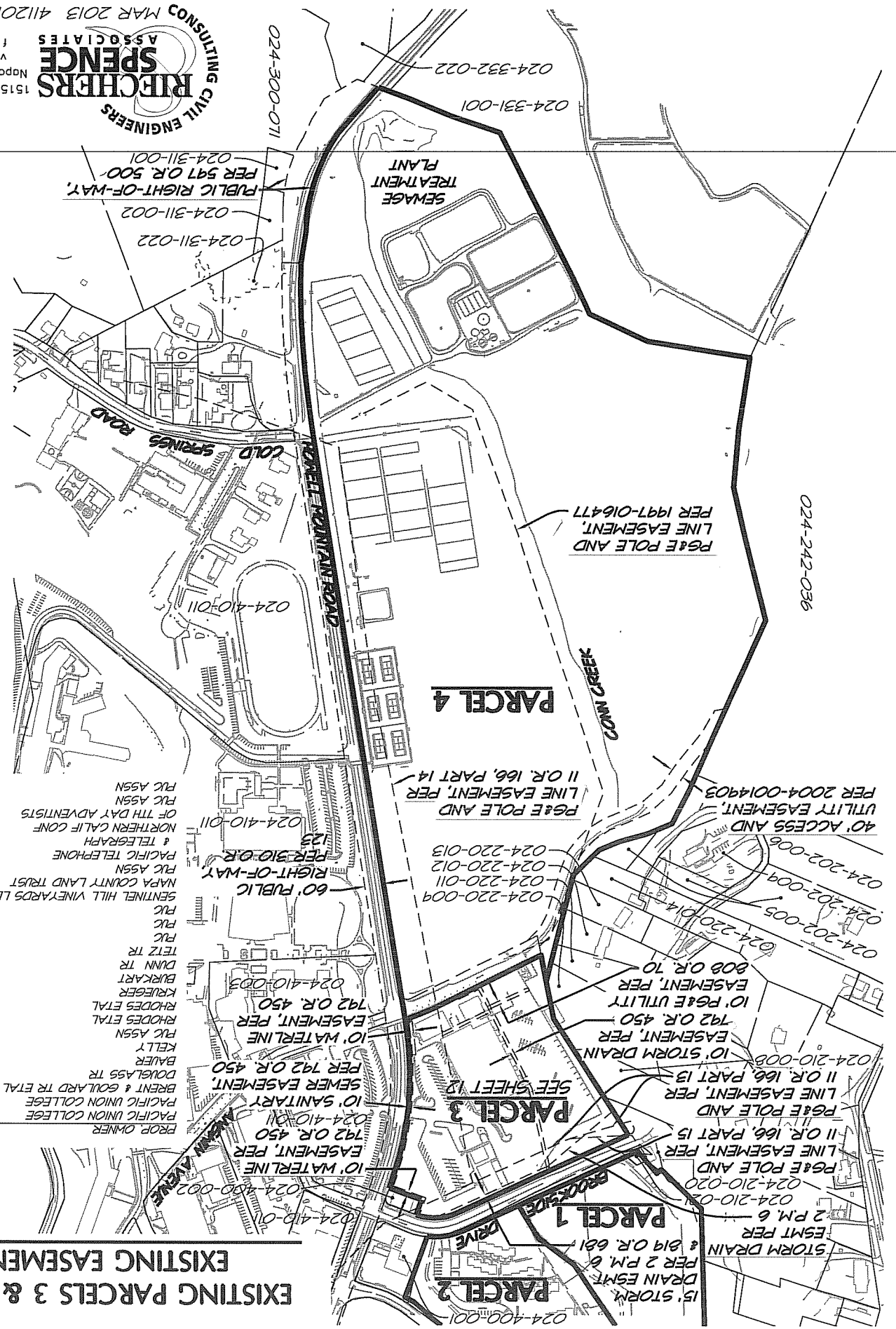
**EXISTING PARCELS 1 & 2
 WITH EXISTING EASEMENTS
 AND BUILDINGS**

SCALE: 1"=400'

EXISTING PARCELS 3 & 4 WITH EXISTING EASEMENTS

- AP NUMBERS
- 024-202-005
 - 024-202-006
 - 024-202-004
 - 024-202-009
 - 024-210-008
 - 024-210-020
 - 024-210-021
 - 024-220-004
 - 024-220-011
 - 024-220-012
 - 024-220-013
 - 024-220-014
 - 024-242-036
 - 024-300-011
 - 024-311-001
 - 024-311-002
 - 024-311-022
 - 024-332-022
 - 024-400-001
 - 024-400-002
 - 024-410-003
 - 024-410-007
 - 024-410-011

- PROP. OWNER
- PACIFIC UNION COLLEGE
 - PACIFIC UNION COLLEGE
 - BRENT & GOLF RD TR ETAL
 - DOUGLASS TR
 - BAUER
 - KELLY
 - PUC ASSN
 - RHODES ETAL
 - 024-410-003
 - KRUEGER
 - BURKART
 - DUNN TR
 - TEIZ TR
 - PUC
 - PUC
 - PUC
 - SENTINEL HILL VINEYARDS LLC
 - NAPA COUNTY LAND TRUST
 - PUC ASSN
 - PACIFIC TELEPHONE
 - & TELEGRAPH
 - NORTHERN CALIF CONF
 - NORTH DAY ADVENTISTS
 - PUC ASSN
 - PUC ASSN

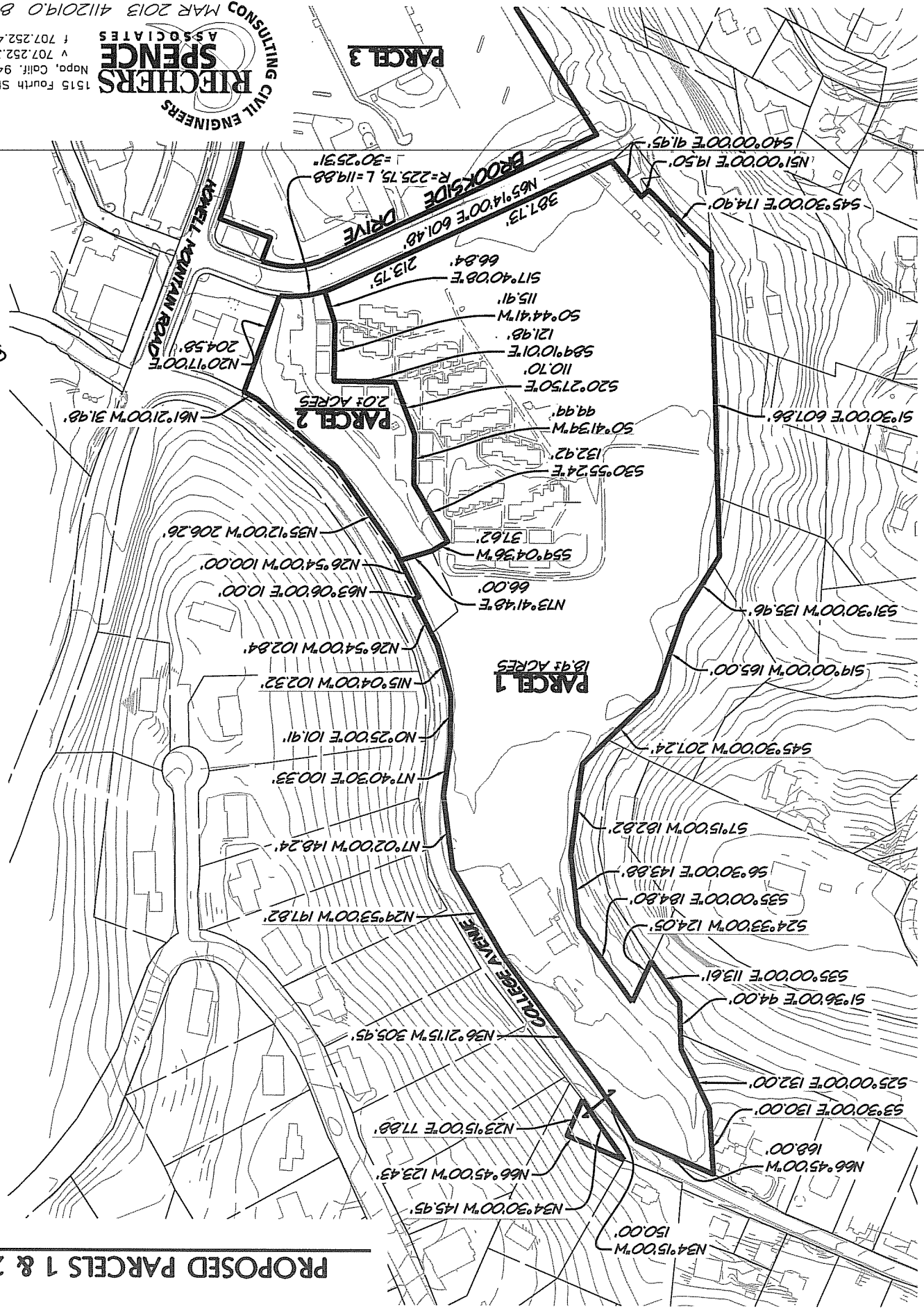


SEE SHEET 12

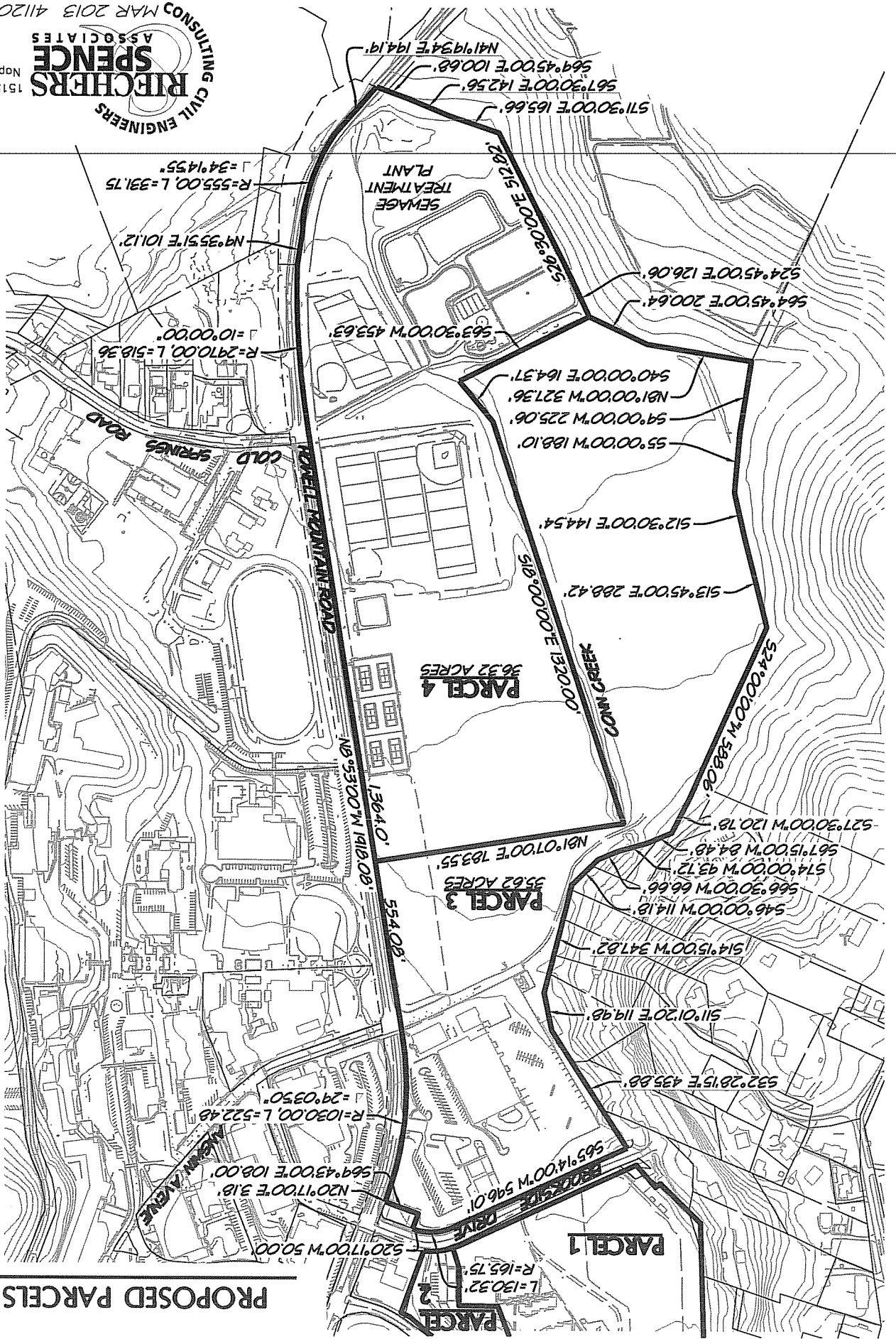
SCALE: 1"=250'



PROPOSED PARCELS 1 & 2



SCALE: 1"=400'



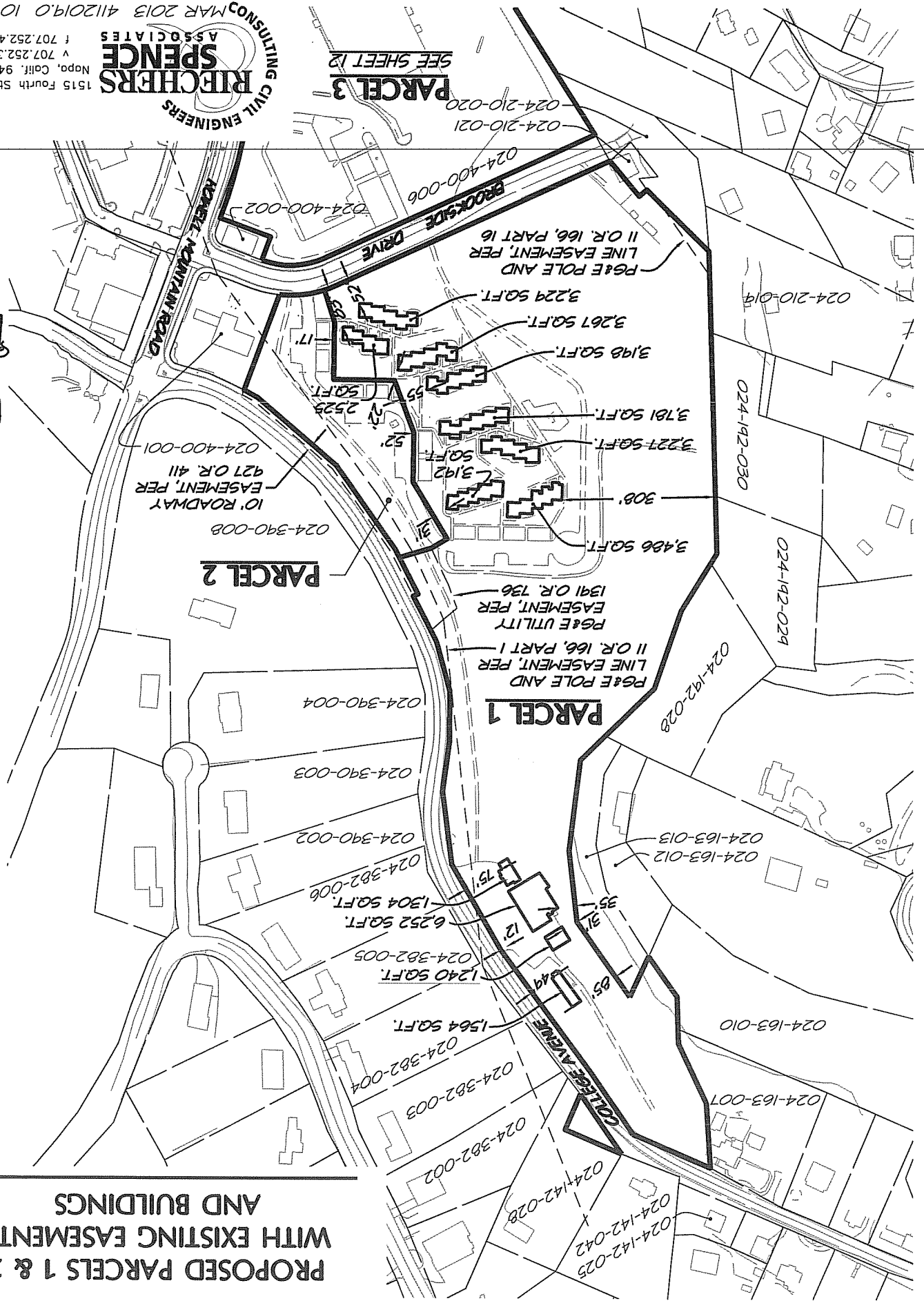
PROPOSED PARCELS 3 & 4

PARCEL 3
SEE SHEET 12


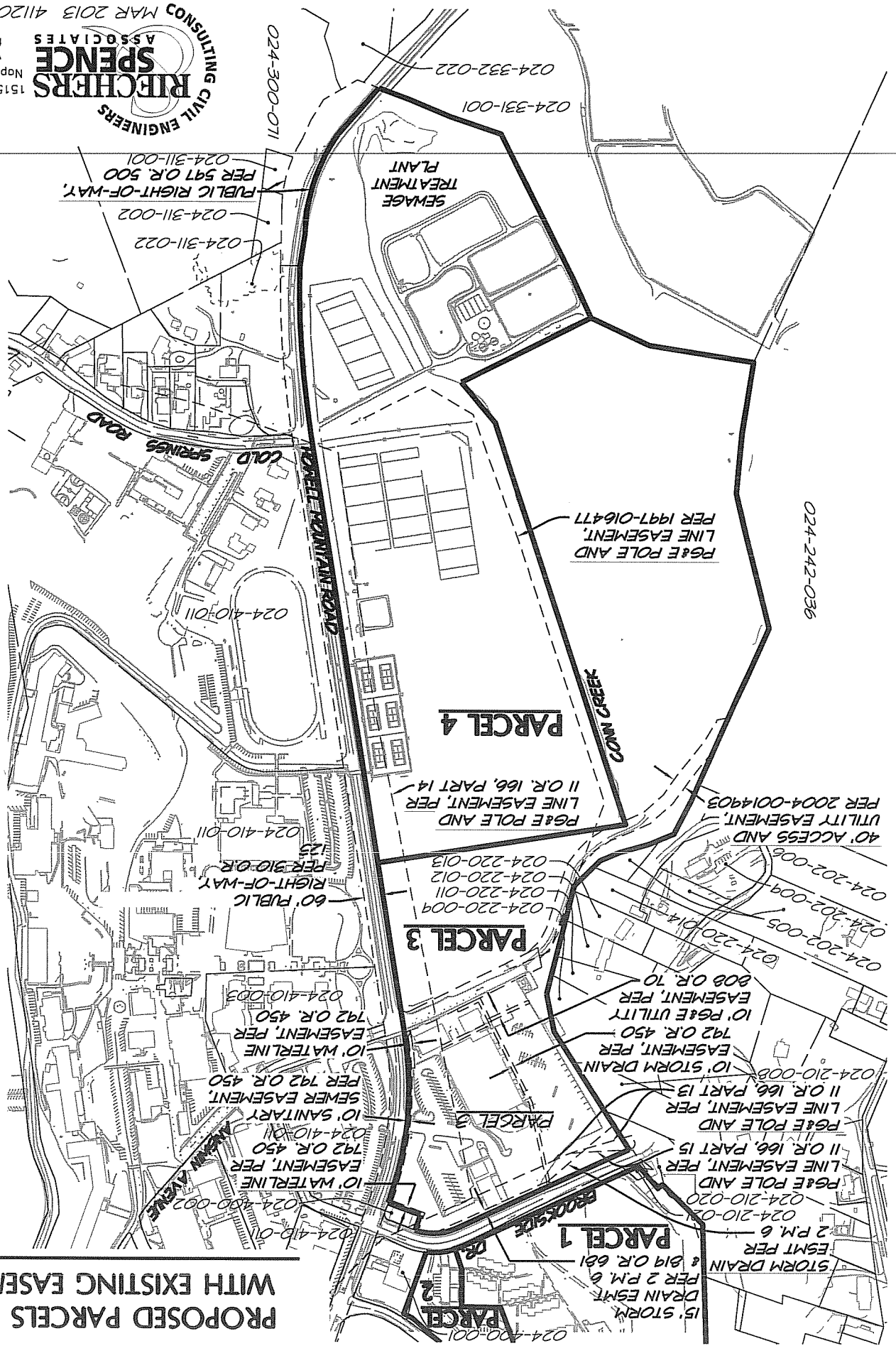
SCALE: 1"=250'



**PROPOSED PARCELS 1 & 2
WITH EXISTING EASEMENTS
AND BUILDINGS**



SCALE: 1"=400'

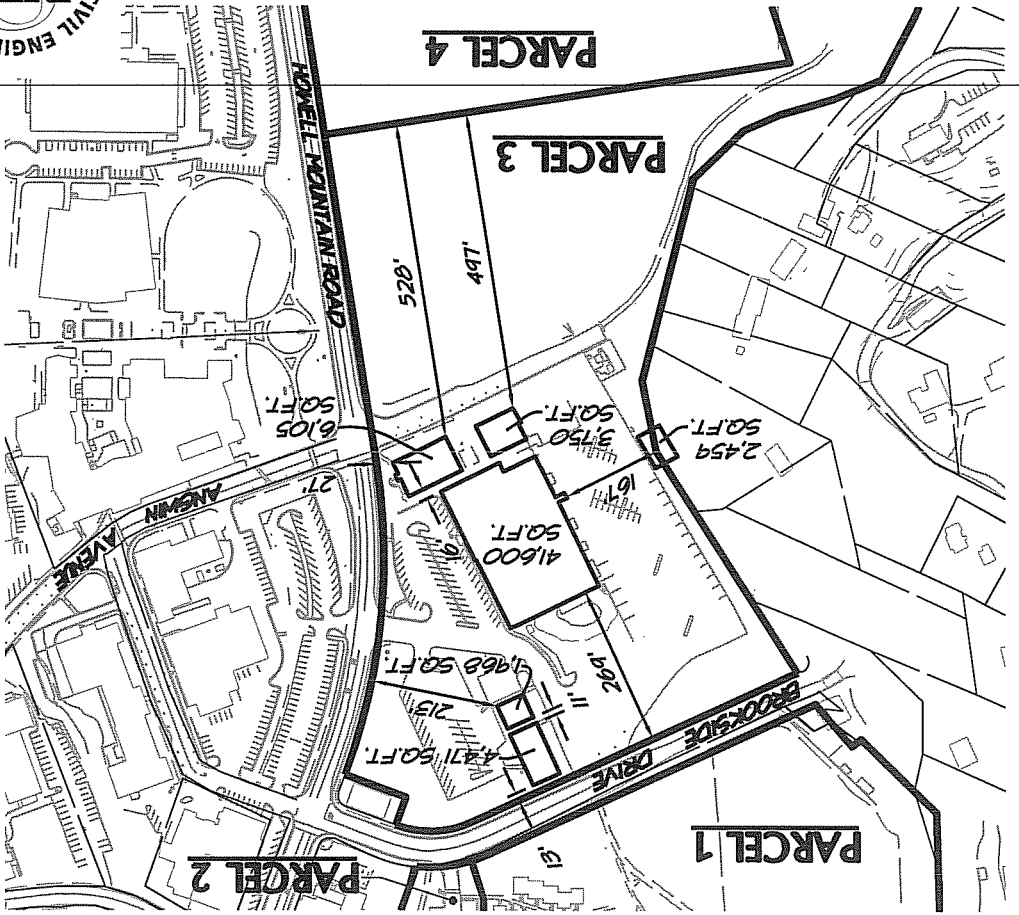



PROPOSED PARCELS 3 & 4 WITH EXISTING EASEMENTS

SCALE: 1"=300'



BUILDINGS ON PROPOSED PARCELS



BUILDINGS ON EXISTING PARCELS

