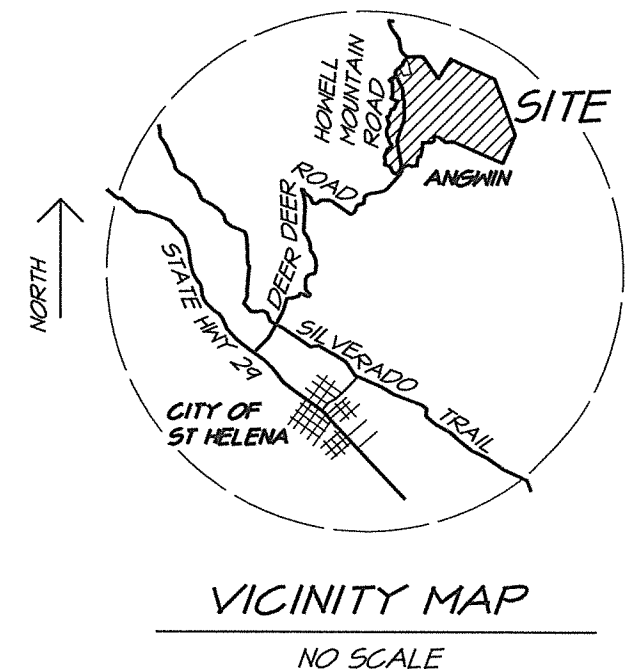


PACIFIC UNION COLLEGE
LOT LINE ADJUSTMENT
 NAPA COUNTY CALIFORNIA

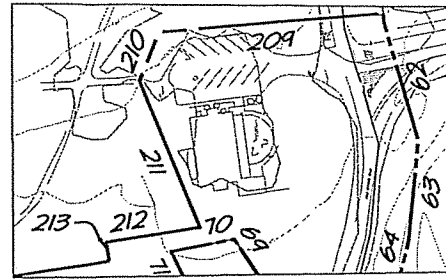
EXISTING PARCEL INFORMATION

	PARCEL 1	PARCEL 2	PARCEL 3
ASSESSOR PARCEL NUMBER	APN: 024-080-034	APN: 024-080-032	APN: 024-080-033 & 036, 024-410-014, SFAP
OWNER	PACIFIC UNION COLLEGE A CALIF CORP. 1 ANGWIN ANGWIN, CA 94508	PACIFIC UNION COLLEGE A CALIF CORP. 1 ANGWIN ANGWIN, CA 94508	PACIFIC UNION COLLEGE ASSN. 1 ANGWIN ANGWIN, CA 94508
SITE ADDRESS	UNKNOWN AT THIS TIME	UNKNOWN AT THIS TIME	181 OAK 100 HOWELL MT ROAD 200 ANGWIN
PROPERTY SIZE IN ACRES	388.58 ACRES	269.32 ACRES	296.32 ACRES
LAND USE			
EXISTING	MIXED USE	MIXED USE	MIXED USE
PROPOSED	MIXED USE	MIXED USE	MIXED USE
WATER SOURCE			
EXISTING	PACIFIC UNION COLLEGE	PACIFIC UNION COLLEGE	PACIFIC UNION COLLEGE
PROPOSED	PACIFIC UNION COLLEGE	PACIFIC UNION COLLEGE	PACIFIC UNION COLLEGE
SEWAGE DISPOSAL			
EXISTING	SEWER TREATMENT PLANT	SEWER TREATMENT PLANT	SEWER TREATMENT PLANT
PROPOSED	SEWER TREATMENT PLANT	SEWER TREATMENT PLANT	SEWER TREATMENT PLANT
WILLIAMSON ACT			
EXISTING	NOT UNDER CONTRACT	NOT UNDER CONTRACT	NOT UNDER CONTRACT
PROPOSED	NO CONTACT PROPOSED	NO CONTACT PROPOSED	NO CONTACT PROPOSED



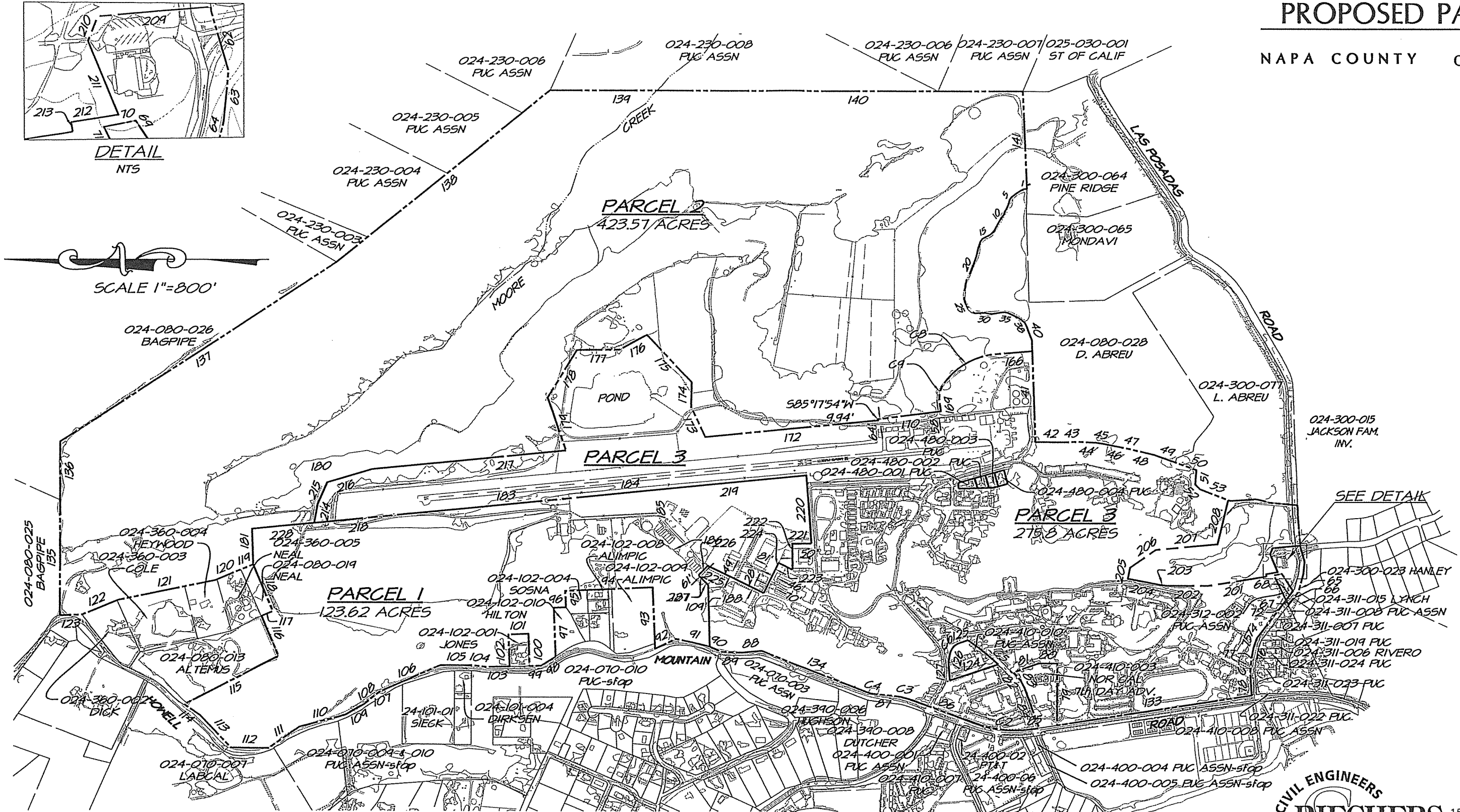
PROPOSED PARCELS

NAPA COUNTY CALIFORNIA

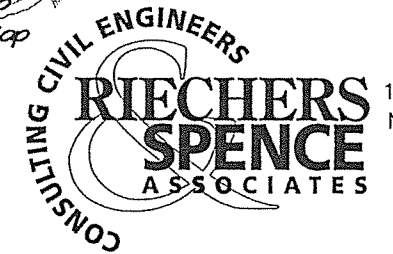


DETAIL
NTS

SCALE 1"=800'



SEE DETAIL



1515 Fourth Street
Napa, Calif. 94559
v 707.252.3301
f 707.252.4966

EXISTING PARCELS

NAPA COUNTY CALIFORNIA

PARCEL LINE TABLE			PARCEL LINE TABLE			PARCEL LINE TABLE			PARCEL LINE TABLE			PARCEL LINE TABLE			PARCEL LINE TABLE		
LINE #	DIRECTION	LENGTH	LINE #	DIRECTION	LENGTH	LINE #	DIRECTION	LENGTH	LINE #	DIRECTION	LENGTH	LINE #	DIRECTION	LENGTH	LINE #	DIRECTION	LENGTH
1	S5°47'08"E	28.09'	20	S68°41'31"E	124.91'	40	N69°08'54"E	126.98'	79	N90°00'00"W	514.61'	109	S30°19'29"E	175.56'	170	N7°26'10"W	517.51'
2	S25°53'57"E	29.95'	21	S61°57'42"E	60.03'	41	N88°00'30"E	840.34'	80	S0°00'00"E	158.00'	110	S15°04'29"E	392.70'	172	N5°42'54"W	1433.86'
3	S32°29'36"E	29.59'	22	S79°18'10"E	127.53'	42	N0°18'07"E	263.17'	81	S20°05'00"E	220.40'	111	S35°19'29"E	308.88'	173	N64°30'36"E	276.39'
4	S36°56'41"E	60.26'	23	N82°43'44"E	30.16'	43	N2°37'32"W	90.38'	82	N48°21'00"E	85.94'	112	S0°55'31"W	308.88'	174	S88°40'01"E	204.87'
5	S54°43'57"E	29.75'	24	N73°03'11"E	34.31'	44	N2°46'29"E	154.21'	83	N61°12'00"E	68.07'	113	S46°55'31"W	364.98'	175	N46°31'51"E	534.59'
6	S76°22'36"E	29.78'	25	N65°20'59"E	29.02'	45	N9°13'53"E	59.83'	84	N69°35'30"E	360.96'	114	S35°10'31"W	160.28'	176	N28°30'38"W	254.01'
7	S68°05'05"E	35.68'	26	N52°44'49"E	30.88'	46	N11°06'08"E	213.75'	85	S8°53'00"E	53.57'	115	N27°37'59"W	864.54'	177	N0°45'48"W	357.48'
8	S59°59'50"E	29.12'	27	N42°36'27"E	30.38'	47	N13°16'52"E	19.88'	86	S20°17'00"W	541.24'	116	S67°16'31"W	360.00'	178	N58°41'15"W	459.32'
9	S68°27'30"E	30.05'	28	N22°59'09"E	29.91'	48	N13°25'47"E	200.30'	87	S5°10'00"W	144.33'	117	N22°43'29"W	100.00'	179	S70°58'15"W	464.30'
10	S56°19'21"E	61.29'	29	N3°02'05"W	66.20'	49	N19°43'29"E	186.44'	88	S5°15'00"E	175.04'	118	S67°16'31"W	420.00'	180	N5°42'54"E	4099.22'
11	S59°47'22"E	29.09'	30	N3°55'43"E	27.31'	50	N19°37'44"E	184.50'	89	S2°40'00"W	163.63'	119	S22°43'29"E	100.00'	181	N87°48'04"E	296.52'
12	S61°43'45"E	66.53'	31	N12°06'19"E	30.13'	51	S85°53'09"E	119.94'	90	S25°30'00"W	102.30'	120	S22°43'29"E	240.86'	182	S5°42'54"E	1222.71'
13	S51°15'19"E	29.72'	32	N0°16'28"E	29.66'	52	N45°32'00"E	56.72'	91	S13°00'00"W	283.14'	121	S11°47'29"E	799.74'	183	S5°42'54"E	1757.32'
14	S34°44'21"E	29.82'	33	N10°07'35"W	65.80'	53	N21°05'05"E	267.99'	92	S25°15'00"E	194.70'	122	S22°15'29"E	323.53'	184	S5°45'09"E	303.40'
15	S26°44'21"E	65.63'	34	N3°21'42"W	31.52'	62	N73°45'30"E	126.77'	93	S87°30'00"W	508.86'	123	S1°51'29"E	179.25'	185	S84°14'51"W	328.67'
16	S54°43'08"E	29.73'	35	N11°30'27"E	29.26'	63	S84°27'40"E	104.53'	94	S2°30'00"E	721.38'	124	S18°29'00"E	427.19'	186	S45°29'49"W	468.22'
17	S72°13'43"E	59.62'	36	N25°25'55"E	93.17'	64	S76°00'00"E	101.20'	95	N87°30'00"E	135.30'	125	N19°18'50"W	78.07'	187	S44°56'10"W	174.59'
18	S77°42'35"E	61.35'	37	N33°10'21"E	29.98'	65	S72°47'15"E	52.50'	96	S2°30'00"E	100.00'	126	N79°30'20"W	67.37'	188	S88°14'28"W	509.51'
19	S71°35'27"E	29.83'	38	N62°03'57"E	31.10'	66	S52°44'00"E	133.54'	97	N87°30'00"E	405.04'	127	S85°37'30"W	155.51'	201	N9°15'00"W	483.38'
			39	N40°18'52"E	34.70'	67	S63°24'00"W	44.56'	98	S33°15'00"E	138.14'	133	S8°53'00"E	1632.15'	202	N0°00'00"E	360.48'
						68	N52°44'00"W	92.47'	99	S1°15'00"E	97.02'	134	S21°17'00"W	931.55'	203	N8°19'54"E	54.31'
						69	S56°55'40"W	169.94'	100	S87°30'00"W	267.30'	135	S89°54'56"W	956.23'	204	N10°51'57"E	264.47'
						70	S10°55'45"E	66.33'	101	S2°30'00"E	165.00'	136	S89°54'56"W	488.06'	205	S79°08'03"E	92.38'
						71	N63°54'00"E	228.49'	102	N87°30'00"E	264.00'	137	N33°19'29"W	2700.87'	206	S34°29'55"E	261.24'
						72	S52°44'00"E	175.28'	103	S1°15'00"E	198.66'	138	N39°03'31"W	2251.50'	207	S5°22'26"E	514.58'
						74	S52°44'00"E	103.62'	104	S6°45'00"W	109.56'	139	N0°00'00"E	1187.94'	208	S76°46'45"E	376.72'
						75	S70°16'42"E	83.94'	105	S0°15'00"W	262.68'	140	N0°00'00"E	2717.45'	209	N5°02'04"W	230.32'
						76	S80°05'33"E	80.14'	106	S24°05'40"E	542.21'	141	N87°30'00"E	803.39'	210	N68°52'45"W	53.77'
						77	S80°05'33"E	21.71'	107	S19°48'31"E	4.00'	166	N4°55'24"W	312.47'	211	S67°45'01"W	162.91'
						78	N86°08'01"E	166.30'	108	S39°34'29"E	160.28'	169	S82°33'50"W	87.13'	212	N9°15'00"W	97.44'

LINE # DESCRIPTION
 1-1213 EXISTING PROP. LINES
 1214-1218 NEW PROP. LINES

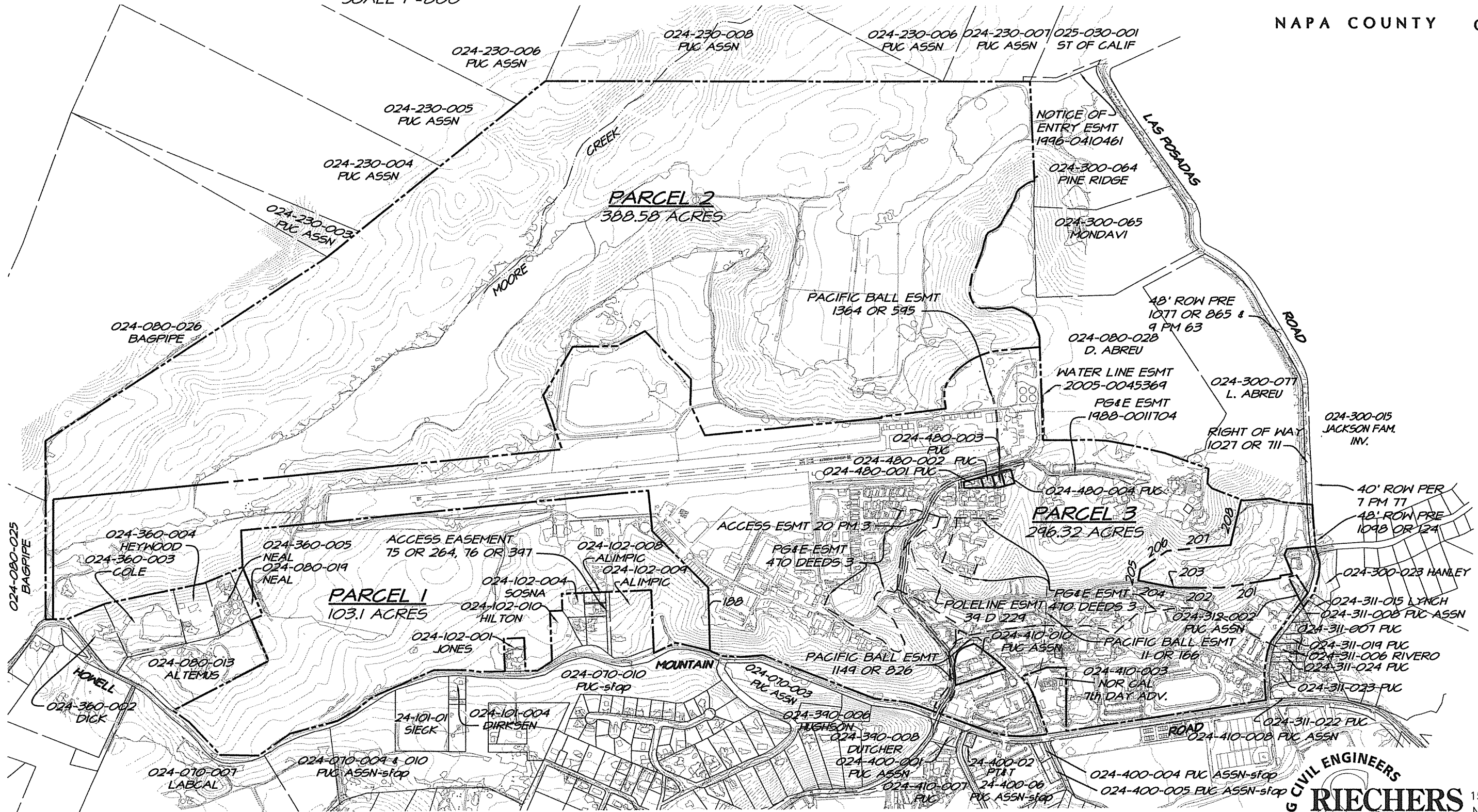
CURVE TABLE			
CURVE #	LENGTH	RADIUS	DELTA
C5	324.93'	1885.28'	Δ=9°52'30"
C6	120.81'	115.00'	Δ=60°11'30"
C4	76.18'	270.00'	Δ=16°10'00"
C3	166.77'	630.00'	Δ=15°10'00"
C2	493.78'	970.00'	Δ=29°10'00"
C1	129.82'	540.00'	Δ=13°46'26"
C8	504.61'	580.00'	Δ=49°50'52"
C9	148.93'	200.00'	Δ=42°39'54"

CONSULTING CIVIL ENGINEERS
RIECHERS & SPENCE ASSOCIATES
 1515 Fourth Street
 Napa, Calif. 94559
 v 707.252.3301
 f 707.252.4966

EXISTING EASEMENTS

NAPA COUNTY CALIFORNIA

SCALE 1"=800'



CONSULTING CIVIL ENGINEERS
RIECHERS SPENCE ASSOCIATES
1515 Fourth Street
Napa, Calif. 94559
v 707.252.3301
f 707.252.4966